

ILVE Live, Cook, Love.

How to Replace the Power Board on ILVE Majestic Ranges



Replacing the Power Board:

If your ILVE Majestic range is experiencing power or control issues, replacing the power board may be necessary. This guide walks you through each step to safely and correctly replace the power board inside your unit. This procedure is best performed by a licensed technician or a confident DIYer with basic electrical knowledge.

Tools Required:

- Screwdriver
- Small Pliers
- Replacement ILVE power board
- Camera or Notepad to record cable positions

How to Replace the Power Board on ILVE Majestic Ranges



Step 1: Remove the Cooking Unit

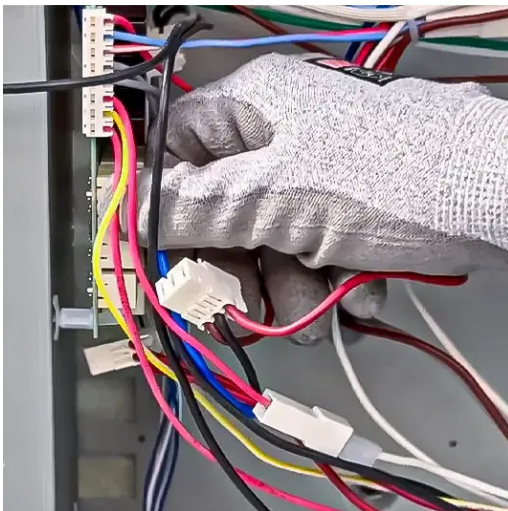
Remove the cooking unit from its built-in housing to expose the back panels.

Step 2: Access the Power Board

Use a screwdriver to remove the back cover.

Step 3: Take Cable Notes

Document the existing cable positions for accurate reassembly later.



Step 4: Disconnect the Cables

Gently unplug all cables connected to the power.

Step 5: Remove the Power Board

Use small pliers to carefully extract the old board from its position.

Step 6: Install the New Board

Insert a new power board into the slot securely.

Step 7: Reconnect the Cables

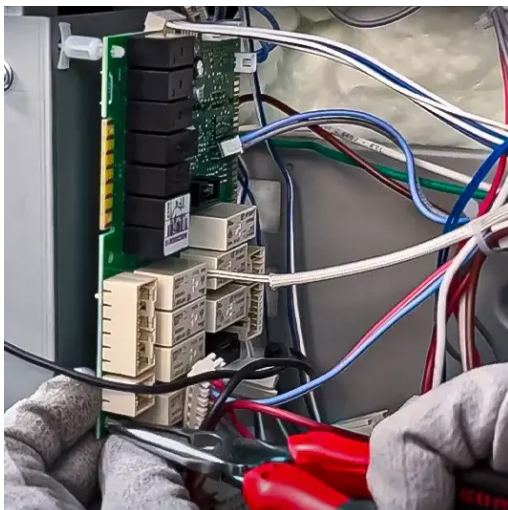
Plug all cables back in their original positions based on your earlier notes.


Step 8: Close the Back Cover

Reattach the back cover and tighten all screws.

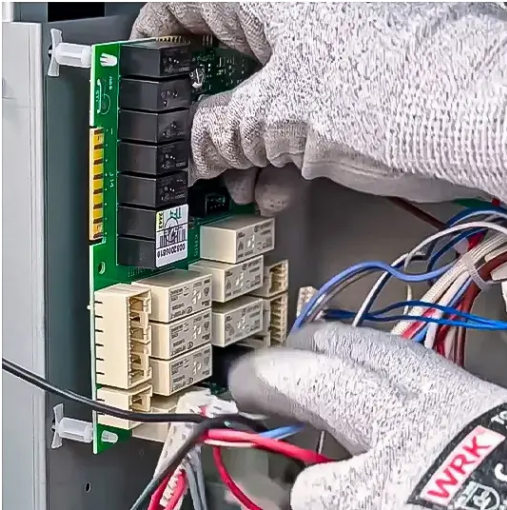
Step 9: Reposition the Units

Slide or position the cooking unit back into its housing.



 **ILVE** Live, Cook, Love.

How to Replace the Power Board on ILVE Majestic Ranges



Final Recommendations

- Refer to the full ILVE Installation Manual for clearance requirements and connection guidelines.
- Always hire a licensed professional for gas and electrical installations.
- Register your ILVE Range online to activate your warranty and receive product support.

Need further assistance? Visit us.ilve.com or contact our support team.

